

GEOMATICS DEPARTMENT

Ministry of Finance and Planning

Dharubaaruge, Dhoshimeyna Hall (1st Floor)

Ameenee Magu, Henveiru, Maale, 20344, Maldives.

Email: survey@housing.gov.mv, Web: www.mlsa.gov.mv



CONTROL POINT DETAILS		Station Number	PSM 0718
Coordinate Information			
Geodetic		Grid	
WGS 84		UTM Zone 43	
Lat:	4° 19' 03.74609"	E:	343928.302 m
Long:	73° 35' 36.95412"	N:	477389.676 m
Ellp. Height:	-96.375 m	Orth Height:	0.746 m
Island Name: K.Kanuoiyhuraa (LD0157)		Date:	20 – 05 - 2025

Monument description & method of survey:

- Concrete casted in situ to a diameter 0.3m PVC pipe, 1m length, 1.5m s/s rod driven to ground as the center with cross mark. Monument labeled with s/s plate stating the point ID.
- Above 150mm from the existing ground level.
- GNSS Static Survey Precise Point Positioning (PPP) post processing.
- Elevation reduced relative to local MSL by reference to Hulhule' tide prediction data.

General site condition & access:

- Easily accessible area with wide angle of sky visibility.
- Infront of Beach Bangalow 422 / 423.

Owner:

Cinnamon Dhonveli Maldives



DOWN TOWARD PSM



Height: 1.5 m
Distance: 2 m

NORTH VIEW



Height: 1.5 m
Distance: 2 m

EAST VIEW



Height: 1.5m

FROM PSM UPTOWARD SKY



Height: 1.5 m
Distance: 2 m

SOUTH VIEW



Height: 1.5 m
Distance: 2 m

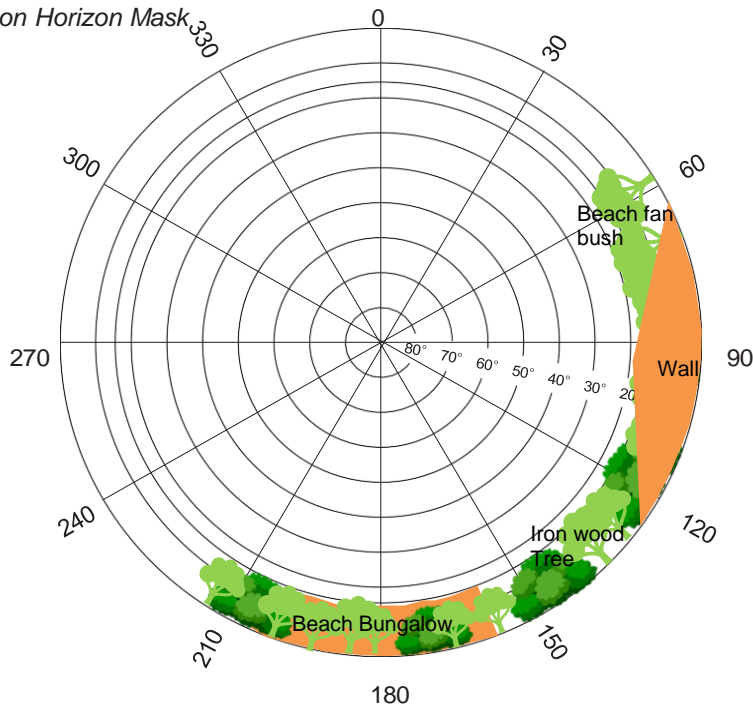
WEST VIEW

SITE INFORMATION

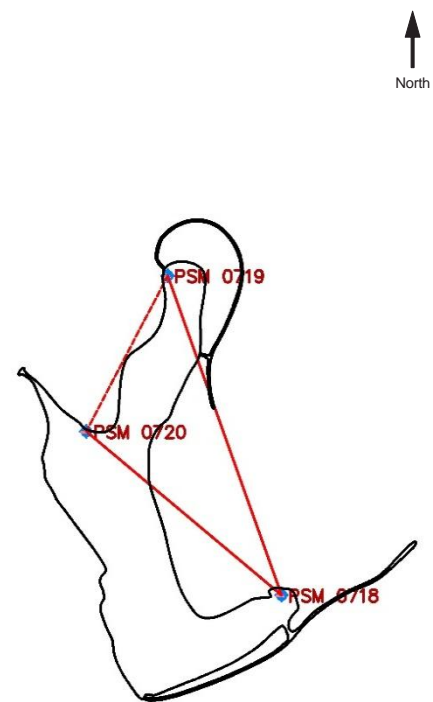
Station Number

P S M 0 7 1 8

Station Horizon Mask 330

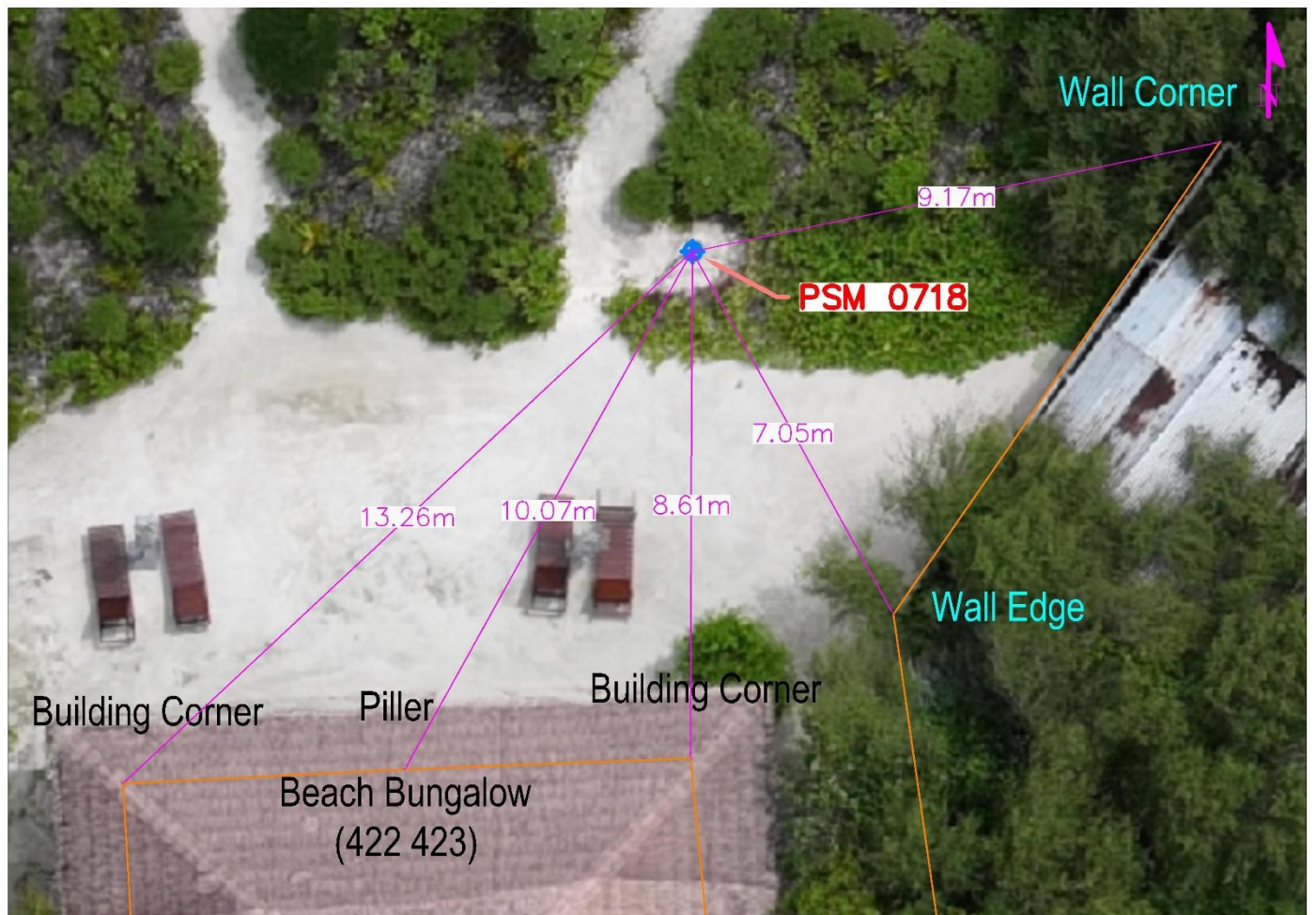


Locality



Height above Marker that horizon was mapped from 1.5 m

Magnetic Declination -----
Declination applied to this figure?
☐ Yes ☒ No



Sketched by: Indula Karunathilaka

Scale: 1:75

Date: 20/05/2025

GEOMATICS DEPARTMENT

Ministry of Finance and Planning

Dharubaaruge, Dhoshimeyna Hall (1st Floor)

Ameenee Magu, Henveiru, Maale, 20344, Maldives.

Email: survey@housing.gov.mv, Web: www.mlsa.gov.mv



CONTROL POINT DETAILS		Station Number	PSM 0719
Coordinate Information			
Geodetic		Grid	
WGS 84		UTM Zone 43	
Lat:	4° 19' 18.78660"	E:	343760.582 m
Long:	73° 35' 31.48655"	N:	477851.938 m
Ellp Height:	-95.884 m	Orth Height:	1.206 m
Island Name: K.Kanuoiyhuraa (LD0157)		Date:	20 – 05 - 2025

Monument description & method of survey:

- Concrete casted in situ to a diameter 0.3m PVC pipe, 1m length, 1.5m s/s rod driven to ground as the center with cross mark. Monument labeled with s/s plate stating the point ID.
- Above 150mm from the existing ground level.
- GNSS static survey post processing with 3D Minimally Constrained Network Adjustment.
- Reduce level of PSM 0718 was transferred to PSM0719 by using the level difference obtained from the GNSS Static Survey and EGM 2008 Geoid.
- PSM 0719 and PSM 0720 are inter visible.

General site condition & access:

- Easily accessible area with wide angle of sky visibility.

Owner:

Cinnamon Dhonveli Maldives.



DOWN TOWARD PSM



NORTH VIEW



EAST VIEW



FROM PSM UPTOWARD SKY



SOUTH VIEW



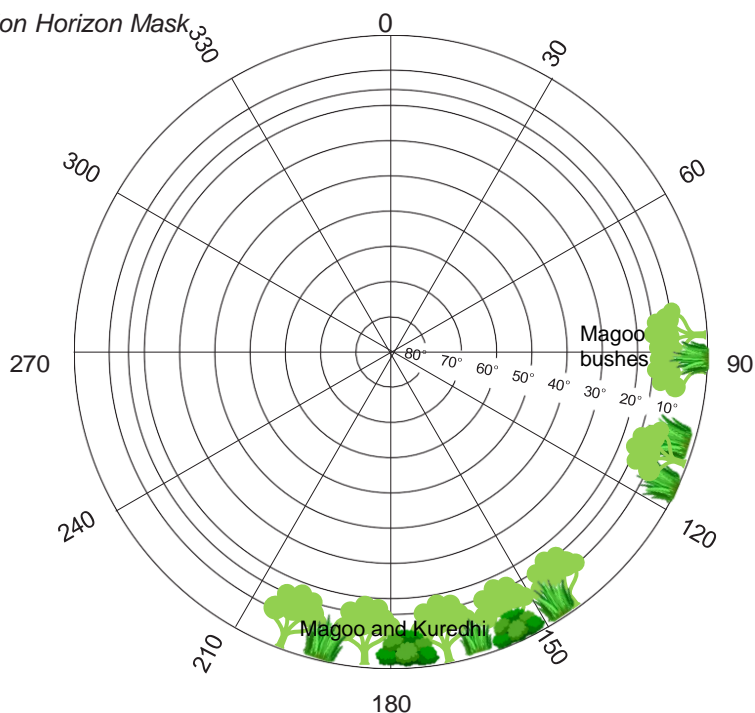
WEST VIEW

SITE INFORMATION

Station Number

P S M 0 7 1 9

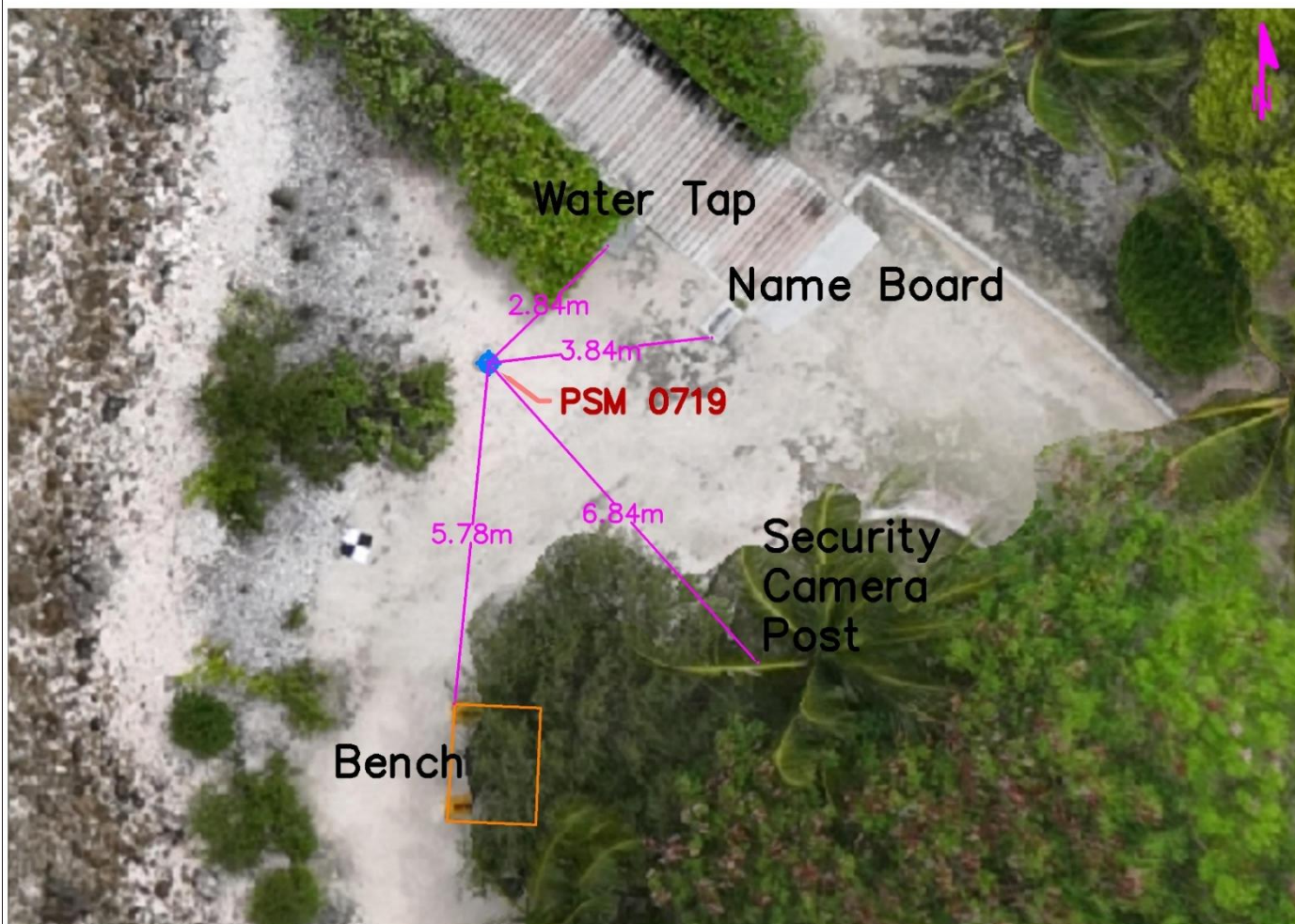
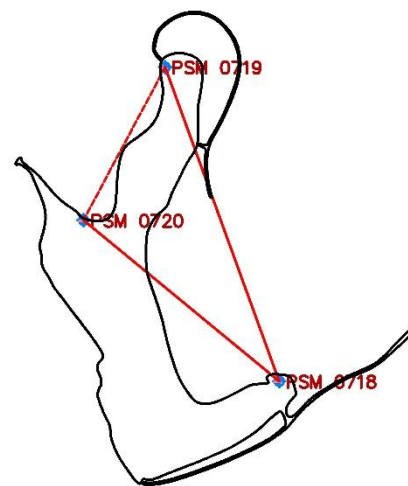
Station Horizon Mask 330



Height above Marker that horizon was mapped from 1.5 m

Magnetic Declination -----
Declination applied to this figure?
☐ Yes ☒ No

Locality



Sketched by: Indula Karunathilaka

Scale: 1:75

Date: 20/05/2025

GEOMATICS DEPARTMENT, Ministry of Finance and Planning, Ameenee Magu,
Henveiru Maale, 20344, Maldives, Email: survey@housing.gov.mv, Web: www.mlsa.gov.mv

GEOMATICS DEPARTMENT

Ministry of Finance and Planning

Dharubaaruge, Dhoshimeyna Hall (1st Floor)

Ameenee Magu, Henveiru, Maale, 20344, Maldives.

Email: survey@housing.gov.mv, Web: www.mlsa.gov.mv



CONTROL POINT DETAILS		Station Number	PSM 0720
Coordinate Information			
Geodetic		Grid	
WGS 84		UTM Zone 43	
Lat:	4° 19' 11.44887"	E:	343640.497 m
Long:	73° 35' 27.60525"	N:	477626.791 m
Ellp Height:	-96.103 m	Orth Height:	0.987 m
Island Name: K.Kanuoiyhuraa (LD0157)		Date:	20 – 05 - 2025

Monument description & method of survey:

- Concrete casted in situ to a diameter 0.3m PVC pipe, 1m length, 1.5m s/s rod driven to ground as the center with cross mark. Monument labeled with s/s plate stating the point ID.
- Above 150mm from the existing ground level.
- GNSS static survey post processing with 3D Minimally Constrained Network Adjustment.
- Reduce level of PSM 0718 was transferred to PSM 0720 by using the level difference obtained from the GNSS Static Survey and EGM 2008 Geoid.
- PSM 0719 and PSM 0720 are inter visible.

General site condition & access:

- Easily accessible area with wide angle of sky visibility.

Owner:

Cinnamon Dhonveli Maldives.



DOWN TOWARD PSM

Height: 1.5 m
Distance: 2 m



NORTH VIEW

Height: 1.5 m
Distance: 2 m



EAST VIEW

Height: 1.5 m



FROM PSM UPTOWARD SKY

Height: 1.5 m
Distance: 2 m



SOUTH VIEW

Height: 1.5 m
Distance: 2 m



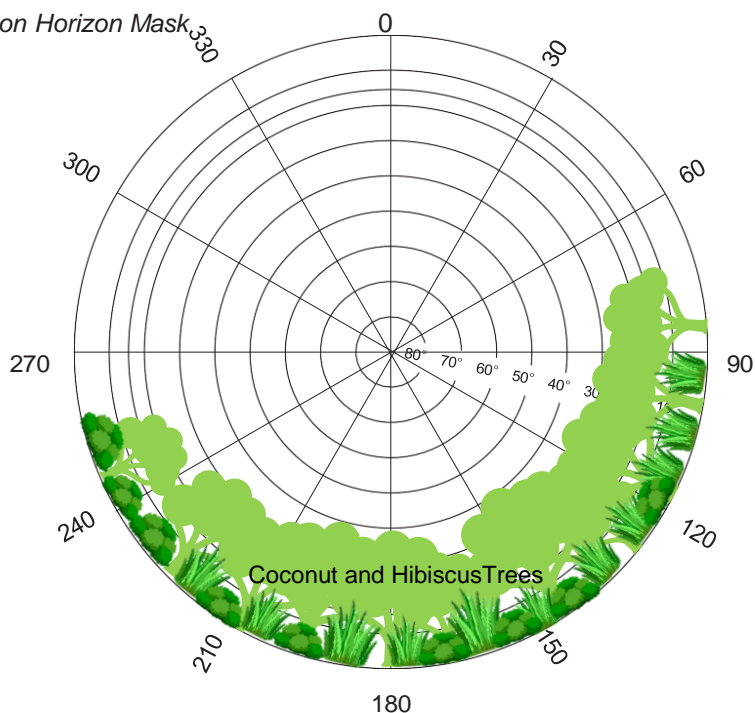
WEST VIEW

SITE INFORMATION

Station Number

P S M 0 7 2 0

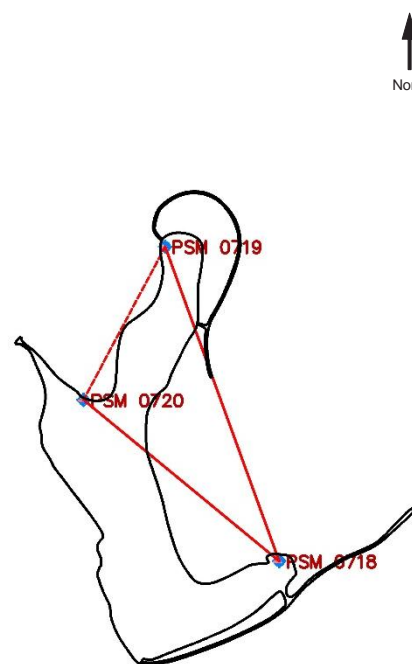
Station Horizon Mask 330



Height above Marker that horizon was mapped from 1.5 m

Magnetic Declination -----
Declination applied to this figure?
☐ Yes ☒ No

Locality



Sketched by: Indula Karunathilaka

Scale: 1:75

Date: 20/05/2025

GEOMATICS DEPARTMENT, Ministry of Finance and Planning, Ameenee Magu,

Henveiru Maale, 20344, Maldives, Email: survey@housing.gov.mv, Web: www.mlsa.gov.mv