

GEOMATICS DEPARTMENT

Ministry of Finance and Planning

Dharubaaruge, Dhoshimeyna Hall (1st Floor)

Ameenee Magu, Henveiru, Maale, 20344, Maldives

Email: survey@housing.gov.mv, Web: www.mlsa.gov.mv



CONTROL POINT DETAILS		Station Number:	PSM5985
Coordinate Information			
Geodetic		Grid	
WGS 84		UTM Zone 43	
Lat: 4°05'28.20998"N		E: 336108.345m	
Long: 73°31'24.86047"E		N: 452355.533m	
Ellp Height: -89.012m		Orth Height: 1.619m	
Island Name: Hathaafinolhu (LD1732)		Date:	24 April 2025

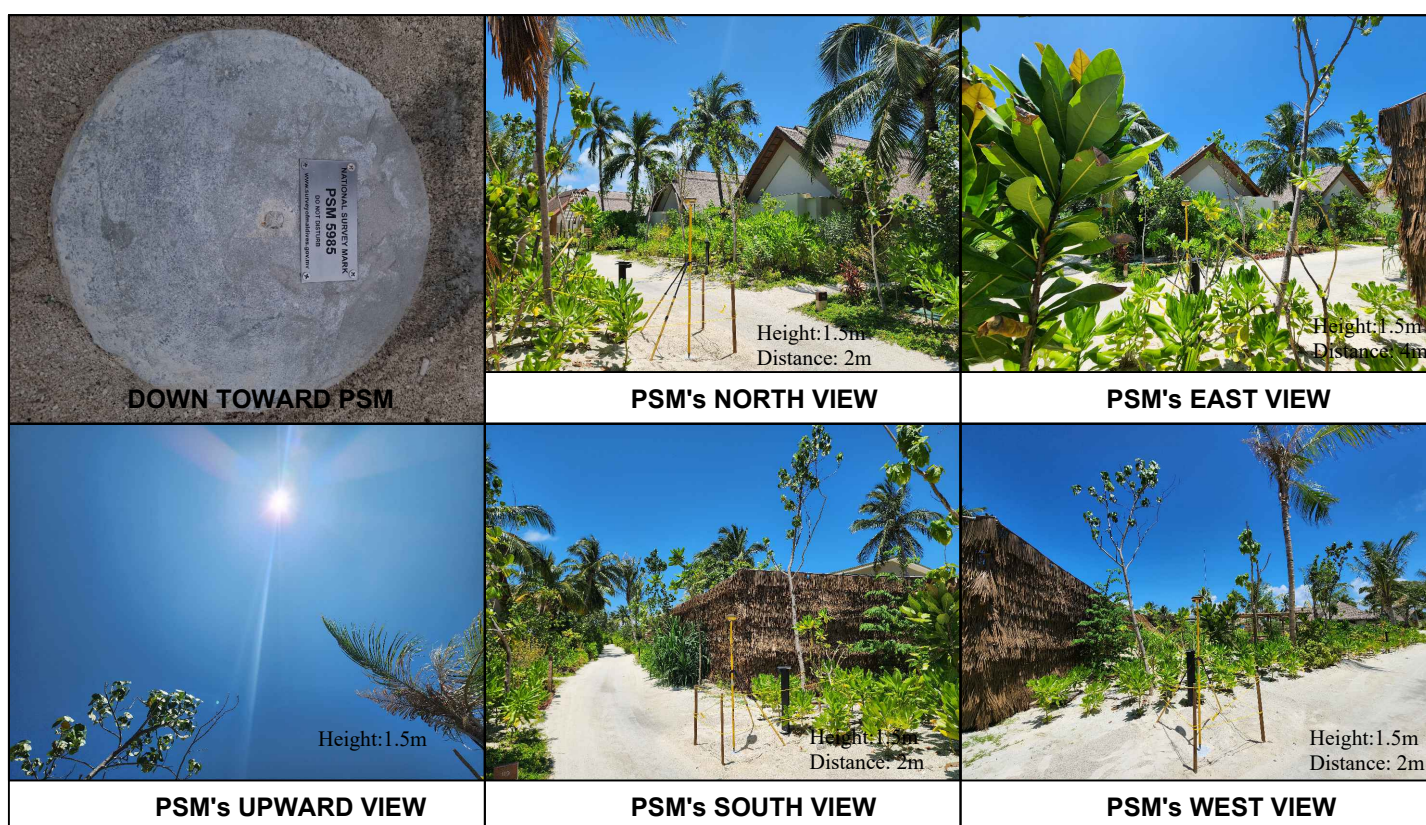
Monument Description & method of survey

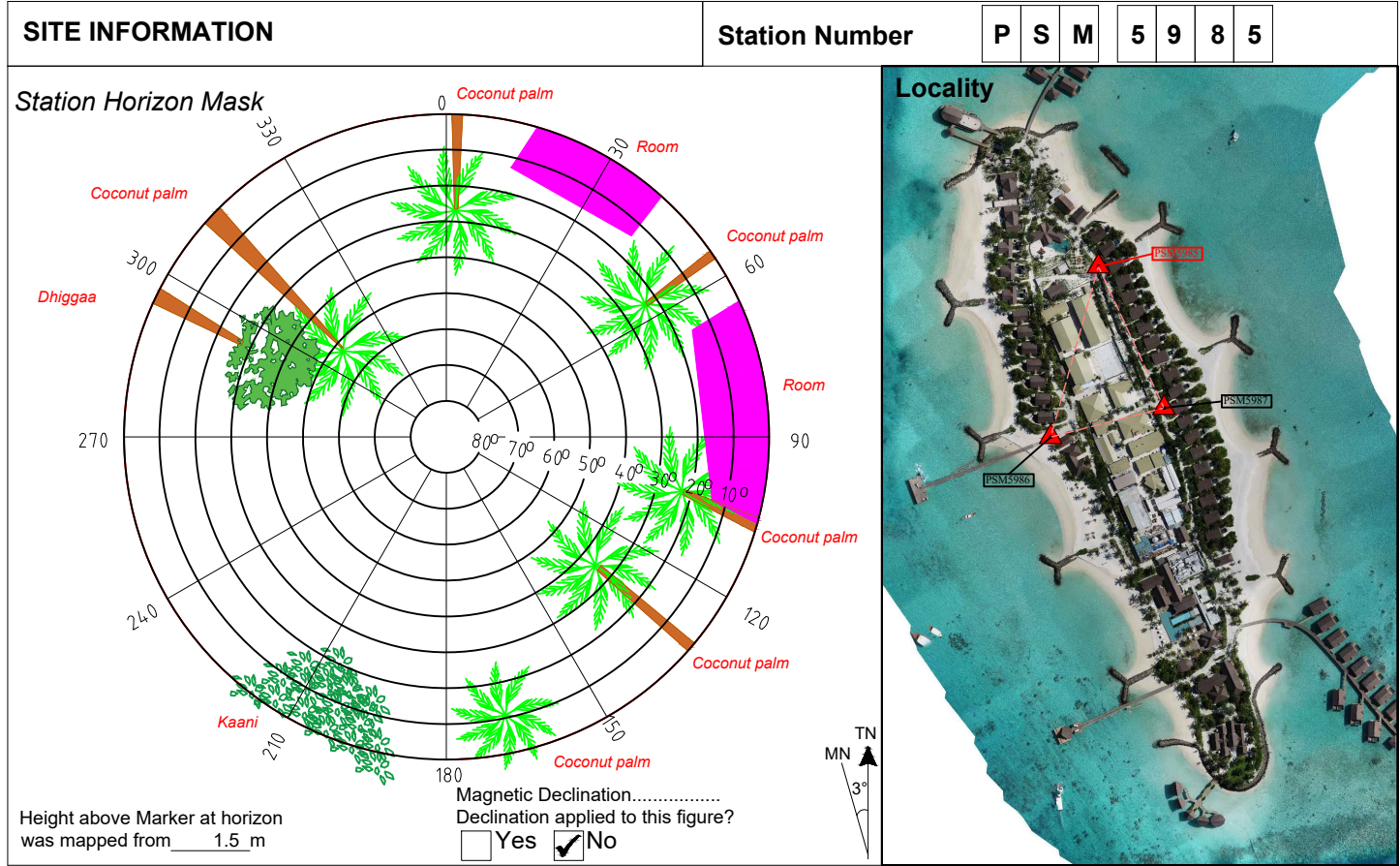
- Constructed to Type A monument specification provided by MLSA.
- Stainless steel PSM plate was secured to the concrete with four bolts.
- Horizontal coordinates were established using a GNSS static survey.
- Located 300mm below ground level.
- The elevation of PSM5986 was reduced to PSM5985 based on the level difference determined through GNSS static survey.

General site condition & access:

- Located side of the walking path with wide view of the sky.
- Located in the northern side of the island in near Garden Villa 119.

Owner: Bayswater Maldives Pvt Ltd





GEOMATICS DEPARTMENT

Ministry of Finance and Planning

Dharubaaruge, Dhoshimeyna Hall (1st Floor)

Ameenee Magu, Henveiru, Maale, 20344, Maldives

Email: survey@housing.gov.mv, Web: www.mlsa.gov.mv



CONTROL POINT DETAILS	Station Number: PSM5986
Coordinate Information	
Geodetic	Grid
WGS 84	UTM Zone 43
Lat: 4°05'23.66329"N	E: 336069.278m
Long: 73°31'23.60209"E	N: 452215.955m
Ellp Height: -89.115m	Orth Height: 1.516m

Island Name: Hathaafinolhu (LD1732)	Date: 24 April 2025
-------------------------------------	---------------------

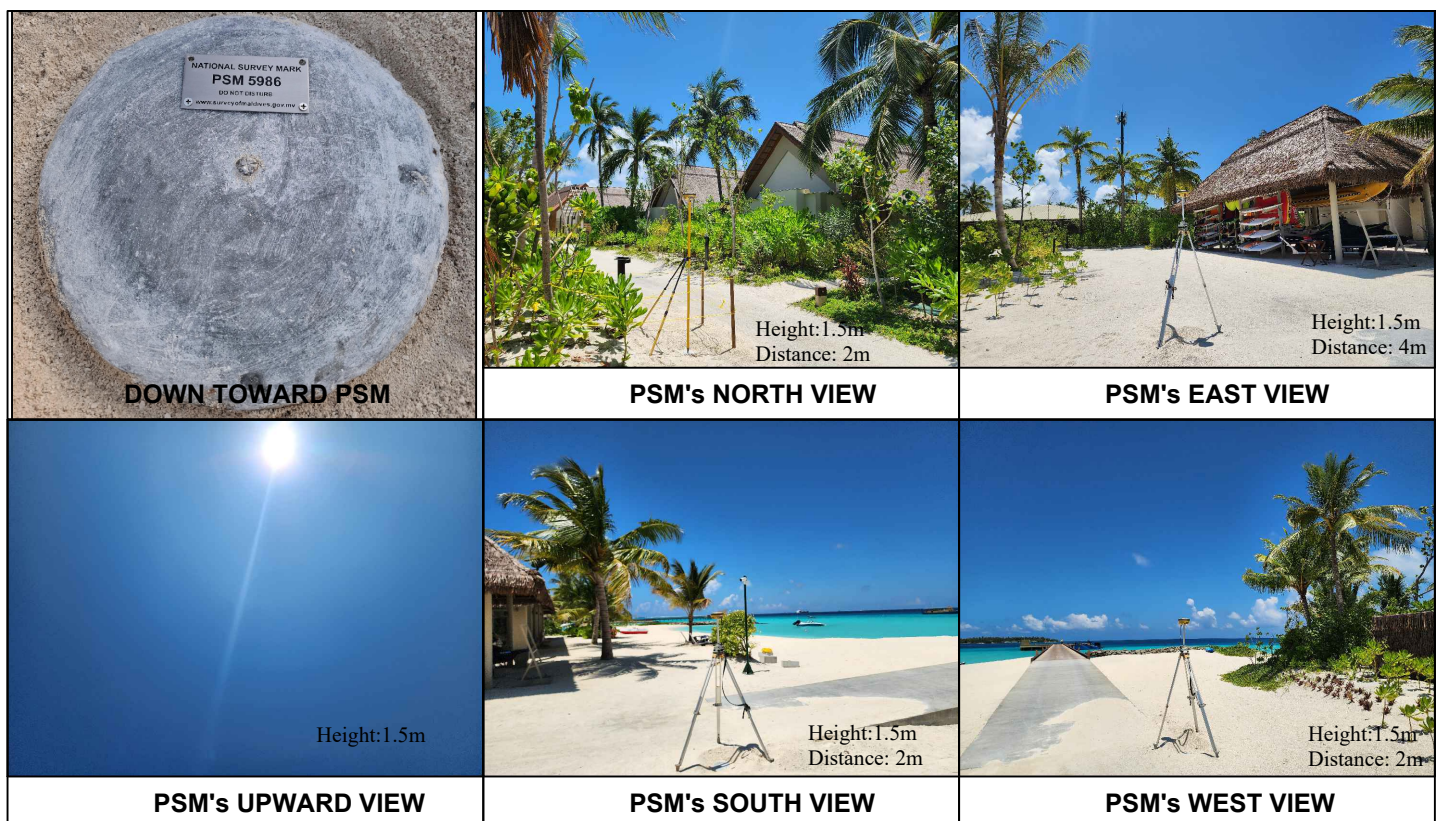
Monument Description & method of survey

- Constructed to Type A monument specification provided by MLSA.
- Stainless steel PSM plate was secured to the concrete with four bolts.
- Horizontal coordinates were established using a GNSS static survey.
- Located 300mm below ground level.
- Ortho height of PSM5986 was calculated using predicted tide data for Hulhule, with in-situ water levels referenced to the tide curve.

General site condition & access:

- Located in the western side of the island near Supply Jetty.

Owner: Bayswater Maldives Pvt Ltd



SITE INFORMATION

Station Number

P

S

M

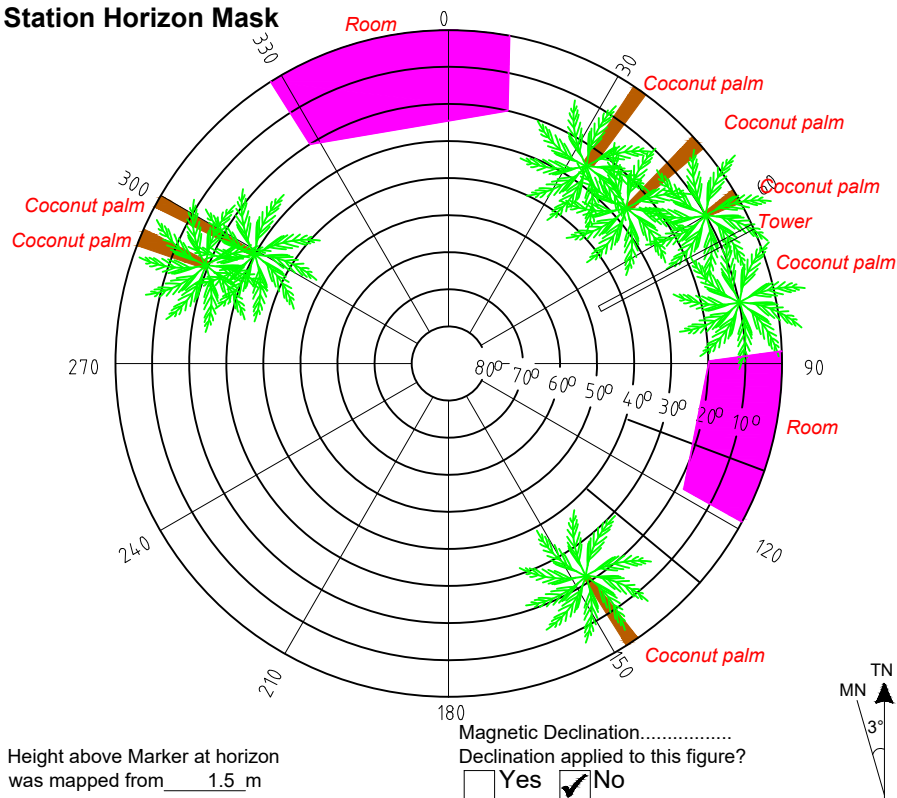
5

9

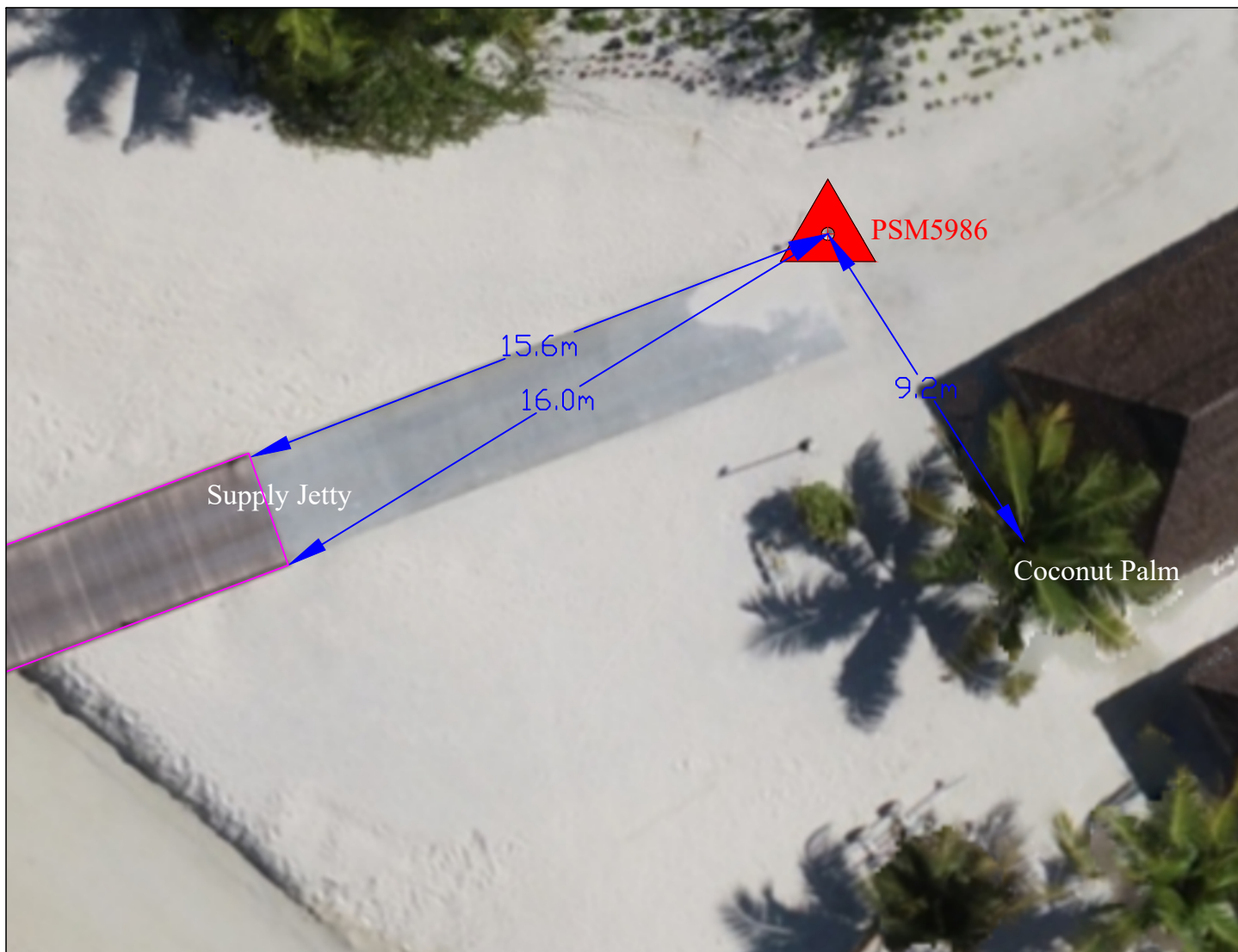
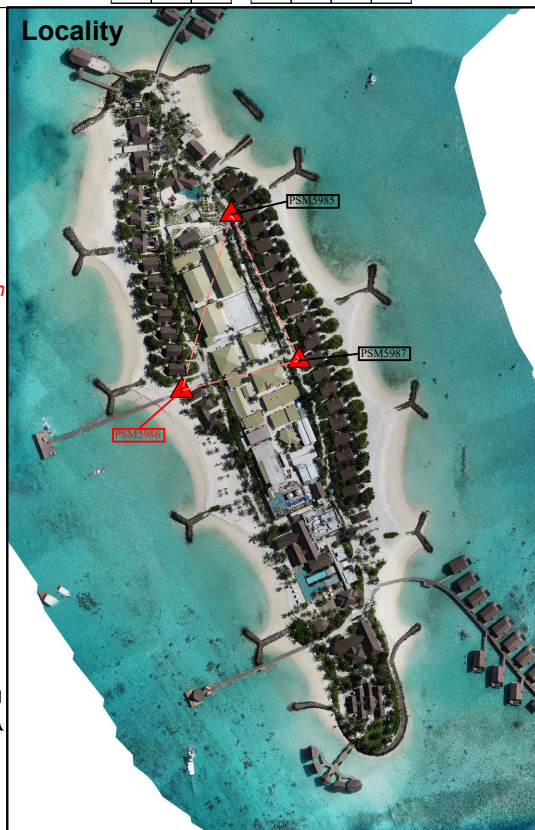
8

6

Station Horizon Mask



Locality



Sketched by: Mizal

Scale: Not to Scale

Date: 24 April 2025

GEOMATICS DEPARTMENT

Ministry of Finance and Planning

Dharubaaruge, Dhoshimeyna Hall (1st Floor)

Ameenee Magu, Henveiru, Maale, 20344, Maldives

Email: survey@housing.gov.mv, Web: www.mlsa.gov.mv



CONTROL POINT DETAILS		Station Number:	PSM5987
Coordinate Information			
Geodetic		Grid	
WGS 84		UTM Zone 43	
Lat: 4°05'24.44411"N		E: 336162.034m	
Long: 73°31'26.60816"E		N: 452239.766m	
Ellp Height: -88.812m		Orth Height: 1.819m	
Island Name: Hathaafinolhu (LD1732)		Date:	24 April 2025

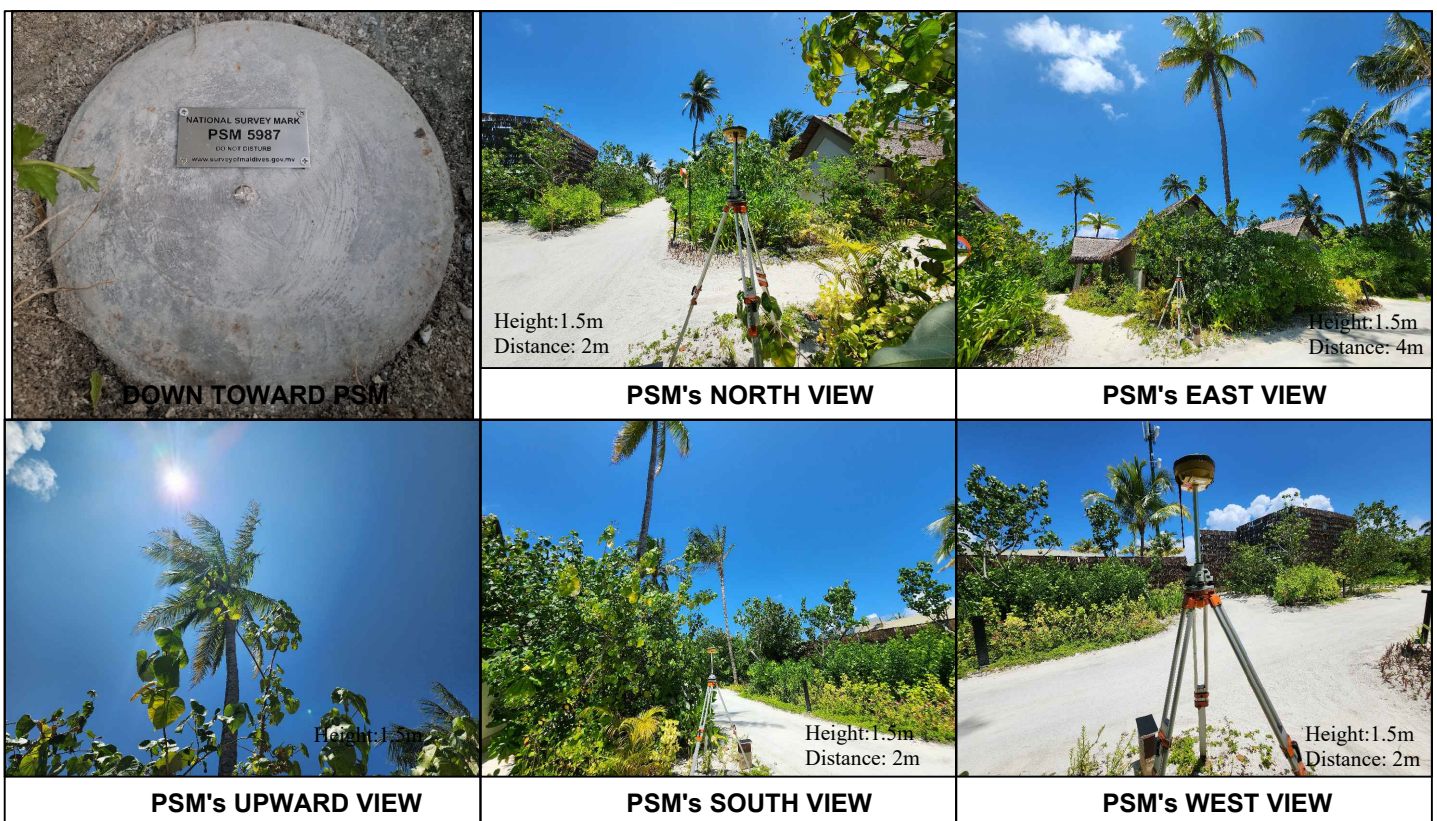
Monument Description & method of survey

- Constructed to Type A monument specification provided by MLSA.
- Stainless steel PSM plate was secured to the concrete with four bolts.
- Horizontal coordinates were established using a GNSS static survey.
- Located 300mm below ground level.
- The elevation of PSM5986 was reduced to PSM5987 based on the level difference determined through GNSS static survey.

General site condition & access:

- Located side of the walking path with wide view of the sky.
- Located in the northern side of the island in near Villa 109.

Owner: Bayswater Maldives Pvt Ltd



SITE INFORMATION

Station Number

P

S

M

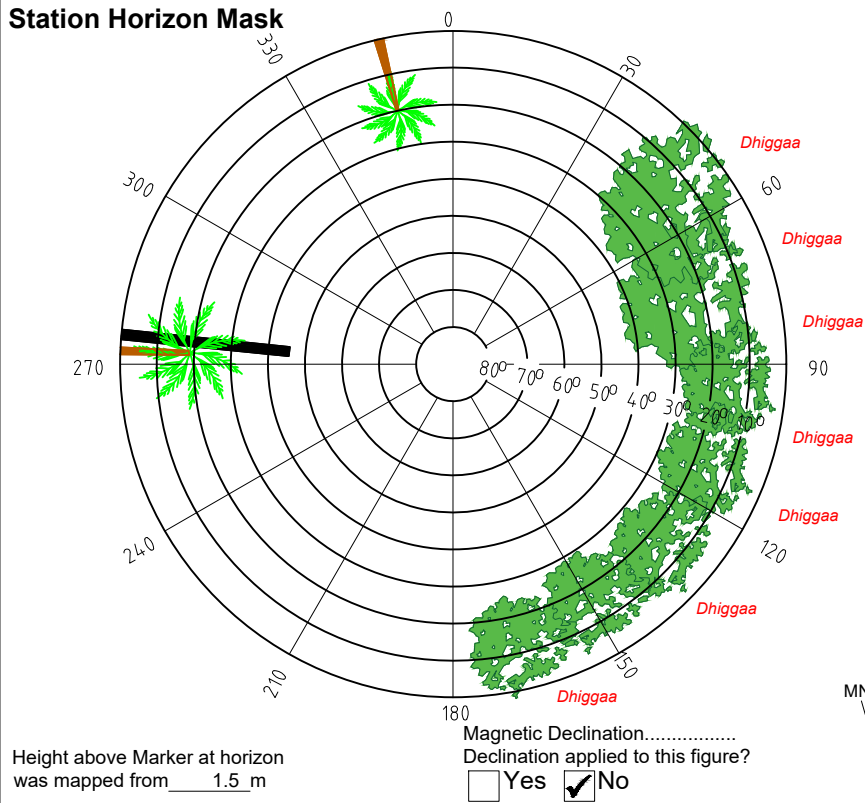
5

9

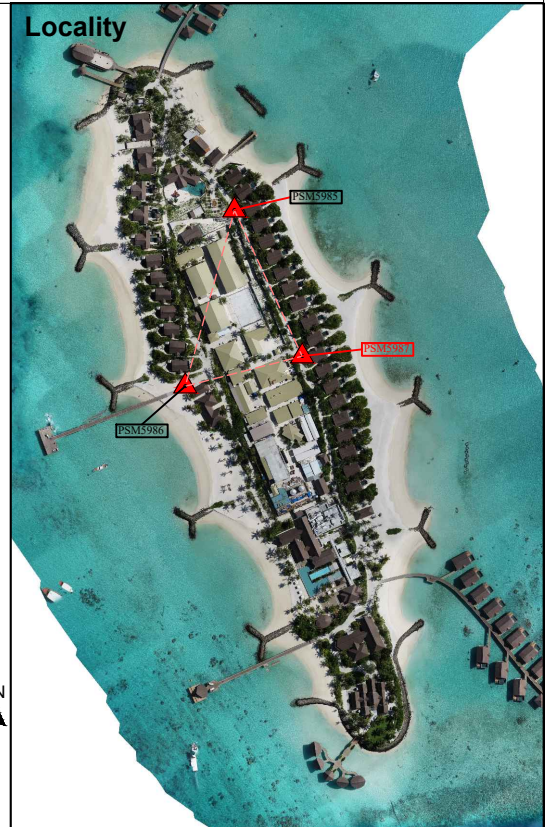
8

7

Station Horizon Mask



Locality



Sketched by: Mizal

Scale: Not to Scale

Date: 24 April 2025